

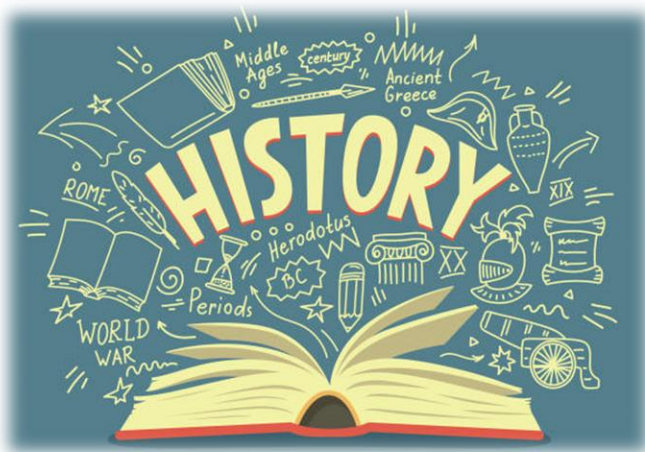


**DOUBLE SL**  
H O L D I N G S  
TA WATERWORLD PRO.  
SINCE 2015

**DOUBLE SL HOLDINGS**

Trading as Waterworld Pro | Since 2015

**COMPANY PROFILE**



## OUR COMPANY HISTORY

Double SL Holdings TA Water World Pro was founded in 2015, with a strong view to contribute to the country's manufacturing sector by ensuring that mainly locally made products are marketed and distributed to the right clientele at all times. Ensuring sound built

and efficient maintenance through SABS approved locally manufactured water and wastewater pipes, fittings, valves, and meters.

The company's success is guaranteed on the business model of sound partnership with the water services' civil engineering and scientific professionals through a mentoring partnership. Although the company's new entry in the Civil, Water and Sewer Material supply but it has created a policy to work with experienced role players so to gain the necessary experience and in understanding the field of trade. W2P will strive to assist clients deliver quality projects on time and at costs every time.

Our ability as an enabler of a pivotal relationship between leading manufactures and industry players which include water services operators while adding value at market related pricing which will ensure an exponential growth of the company's market share. Moreover, the company will always do more to create jobs for the local most rural youths and support impoverished families through the local tribal authority and recognized NGOs who are committed to the fight against hunger and malnutrition.

The rising sun (Mpumalanga) province of South Africa on the N17 road that is a gateway to the Kingdom of eSwatini is our proud home. It is also show stopping panoramic views of incredible biodiversity, forestry, tourism, and agriculture.

The company looks to utilize your support system as a key stakeholder and through our own company website that will also assist facilitate the company's product range knowledge and be a communication portal for both the regular and potential buyers including investors.

## PRODUCT RANGE

**Double SL Holdings TA Water World Pro (PTY) LTD** is a company that is both a market supplier and distributor with a range of services that offers great SABS approved products at the most affordable costs. We supply customers with the best materials and the benefit to choose from our rich catalogues of a wide range material and supplies.

Our product range is to be married to cost effective and market related pricing yet eliminating predatory pricing. In addition we also support our customers with expert advice, thus enable us to offer unparalleled customer service in Water Services Material Supply environment.



**Double SL Holdings TA Water World Pro offer services in the following areas (Agriculture; Industrial and Domestic):**

- ❑ leak detection and repairs in Concrete, uPVC storages
- ❑ Rural and Urban Infrastructure
- ❑ Bulk Distribution Pipelines
- ❑ Water Reticulation Networks Supply
- ❑ Sewer Reticulation Networks Supply
- ❑ Water Material Supply
- ❑ All types of Water Pumps Supply
- ❑ All classes of HDPE water reticulation pipes and fittings supply
- ❑ All classes of Manufactured PVC Water reticulation pipes and fitting supply



TOM500 PVC-0



mPVC

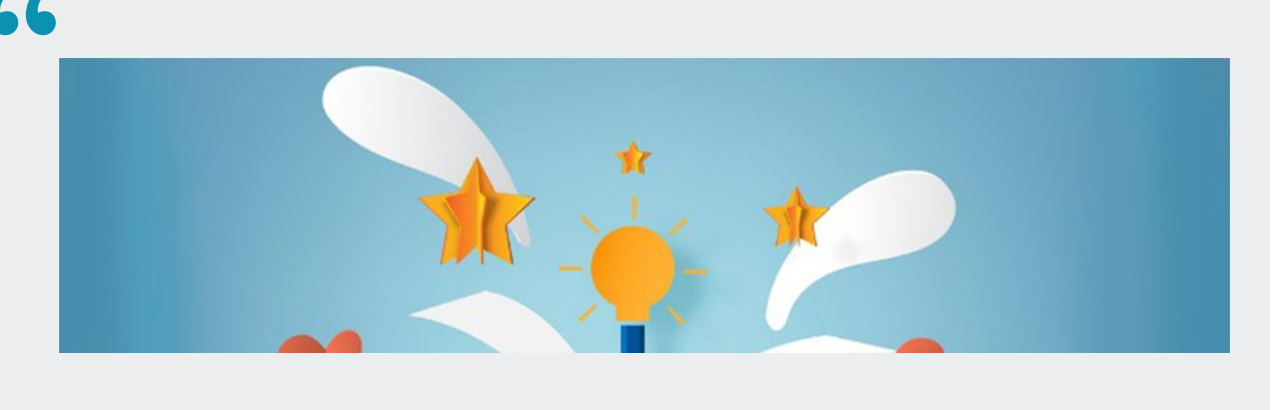


uPVC

The company offers the above provisions of materials on request through its sales consultants who are trained to offer professional service and adequate knowledge.

Demands of the commodities are eminent and the company offers an excellent service through trained and qualified personnel who have acquired experience in the civil built and project management environment.

“



## STRATEGY AND OBJECTIVES

The company's objective is to enhance shareholder wealth through acquisition, exploration and professional service in our field.

The objective will be pursued primarily through active exploration and acquire further quality material on competitive terms, the company will employ internationally recognized quality assurance standards such as ISO/SABS including undertaking risk assessments of its projects and take whatever actions it believes are necessary to ensure that risks are identified and mitigated.

The company believes that networking is vital in the growth of the business; the company creates a budget for travelling and networking with manufactures and buyers of their products.

## VALUES

- ❑ Customer relationship
- ❑ Product range availability
- ❑ Total Quality Assurance
- ❑ Cost effective materials at market related pricing

## VISION

Supply exceptional material in a professional and cost effective way that will create a market foot print, with a strong culture of job creation.

## MISSION STATEMENTS

- ❑ Creating a company that will subscribe fully to its values and vision
- ❑ Have a house that will bring different skills in Civil Work and deliver on them
- ❑ Promote adequate working relationship with our current and future competitors
- ❑ Add value to the current Water Material Supply in the country by becoming a reliable company that promotes professional services.
- ❑ Create Skills Strategy to enable market growth
- ❑ Subscribe to ECSA, BEE and Legislations

Double SL Holdings TA Water World Pro adhere to its promises to clients and employees always, we believe through this our company can achieve all the mentioned statements above.



# MARKET ANALYSIS

**Municipal Governments:** Remote Municipal Governments can expect to have more autonomy with respect to infrastructure growth and development in the years to come. This initiative is part of the Water World Pro's mandate. We will promote our services to the local municipal governments for this purpose. To attract this market potential, we will offer workshops and onsite marketing of locally produces products that add value for money in their maintenance and new construction projects.

**Industry:** we will assist in pricing tenders with our product offerings and provide competitive prices such that we remain an affordable partner in each project they undertake

Double SL Holdings TA Water World Pro will be looking to grow steadily while offering professional services in every sale that we transact. The mining, International markets, government departments working with agriculture, Municipalities who offers water services; and contractors in the civil sector are key stakeholders and enablers of our growth to which allows Double SL Holdings TA Water World Pro to play its role in the Civil and Material supply.



## Double SL Holdings TA Water World Pro

- **International**
- **Government**
- **Industry**
- **Municipality**

Double SL Holdings TA Water World Pro will enjoy a market share locally and internationally in different types of consumers of Civil Works and Water Material, the company will use its resources and branding tools to make their existence be recognized.

Through its inception, the company has successfully networked with different players in the form of consumers and other suppliers.

While also using their professional services to network, the company will subscribe to different publications that most of the professional consumers subscribe to:

- ❑ Engineering Published
- ❑ Practical Engineering Civil Works



## OUR PRODUCT AND SERVICE DIFFERENTIATION

Double SL Holdings TA Water World Pro will eliminate its competitors through product classification which will be high quality and approved materials that will be supplied by ISO certified companies which also subscribes to safety and SABS standards.

The company practice a seven (7) star treatment to its clients and employees, this means all involve parties must have an end result that will be certificatory and welcomed. Our trained personnel will promise to deliver a professional advice and working relationship with all clients, which will set us apart from other companies in service difference

### ***DOUBLE SL HOLDINGS TA WATER WORLD PRO(PTY) LTD.***

***REGISTRATION NO : 2013 / 189400 / 07***

***TAX REGISTRATION NUMBER : 971 080 9154***

***BBB-EE LEVEL CONTRIBUTOR : 1***

***CIDB REGISTRATION:***



#### CONTACT INFORMATION

STAND NO 1004, NHLAZATSHE NO 5, ELUKWATINI, 1192

Mobile No:(+27) 076 125 4494

Contact Person: Mr. Sandile Lubisi

[sslubisi23@gmail.com](mailto:sslubisi23@gmail.com)